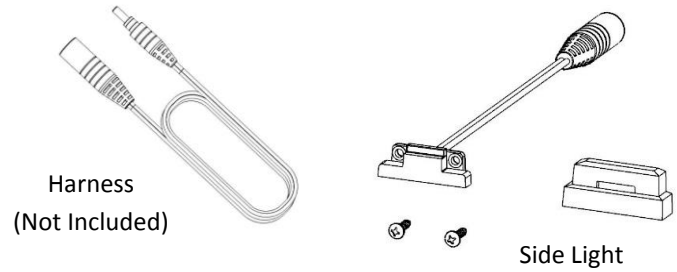


Ornamental LED Side Light

Pre - Installation Notes

- Do not cut any wires. Any extra wire length can be coiled up.
- Ensure that staples, screws, or brackets will not damage or pinch any of the wires.
- Connections can be made by firmly pushing the male and female connectors together and slightly twisting while pushing.

Components



Step 1

Prepare the Transformer and Wiring Harness

- 1.1 Follow instructions provided with the transformer.
- 1.2 Follow instructions for the wiring harnesses so there is a male connector located at each location that will have a light installed.

Step 2

Prepare the Post and the Back Plate

- 2.1 Place the template (located at the bottom of this sheet) at the desired location and pre-drill the two screw holes with a #39 drill bit and one 1/2" hole for the wire and connector to pass through.

- 2.2 Run a Harness (not included) inside the post. The male connector should be coming out of the 1/2" hole.

- 2.3 The female connector should be at the bottom of the post if the wiring will be run at the bottom.

Alternatively, the female connector can be ran to the top if the wiring will run inside or under the top rail. Ensure that future screws or brackets will not damage the wire.

- 2.4 Plug the female connector (from Step 2.3) into the male connector that is connected to the transformer. Press firmly while twisting until the connection is fully engaged. There should be little to no gap between the connectors.

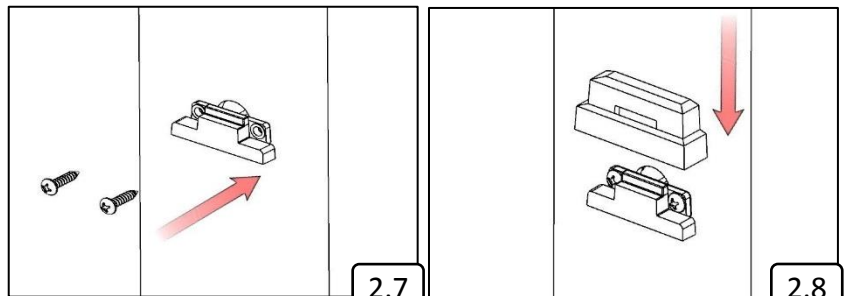
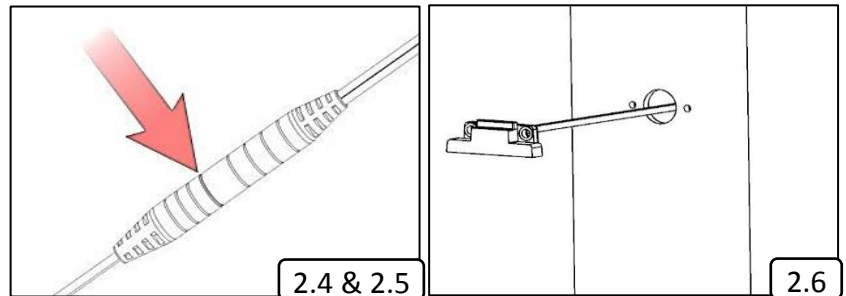
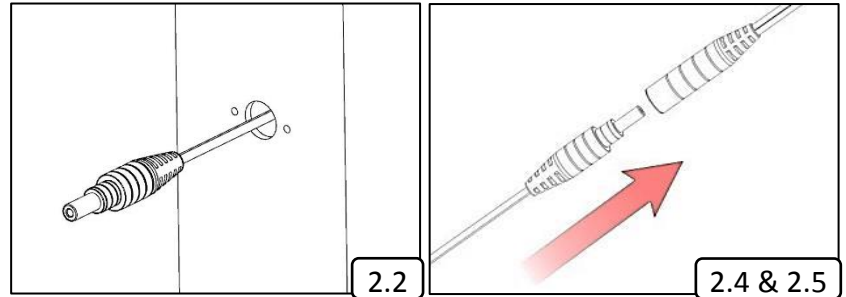
- 2.5 Plug the male connector (from Step 2.2) into the female connector attached to the light. Press firmly while twisting until the connection is fully engaged. There should be little to no gap between the connectors.

If the transformer is turned on, the light should be illuminated.

- 2.6 Carefully push the wire and connection back through the 1/2" hole until the back of the light is flush with the post.

- 2.7 Align the screws with the pre-drilled holes. With a hand screw driver (power drivers not recommended), tighten the included stainless steel screws to mount the light to the post.

- 2.8 Align the cover above the light and push the cover down onto the lens.



Drilling Template

