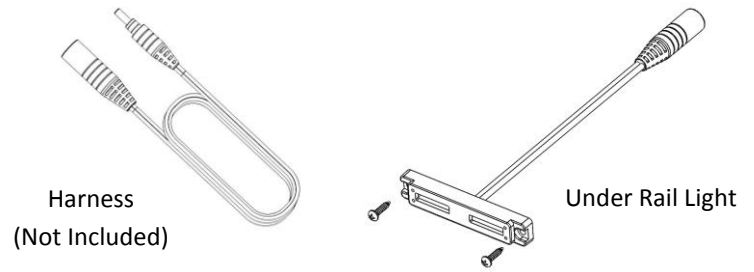


LED Under Rail

Pre - Installation Notes

- Do not cut any wires. Any extra wire length can be coiled up.
- During installation, it is recommended that you temporarily cover the photocell on the transformer with dark tape so the lights will be on when you plug them in. This will help check for any issues during installation. Remove tape when done.

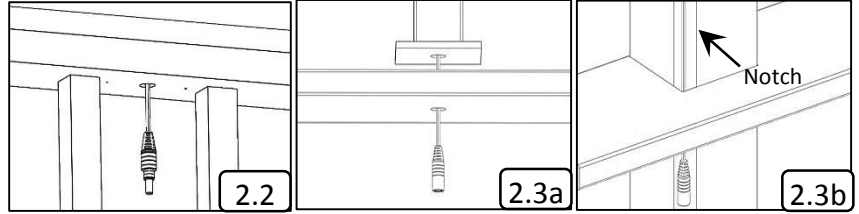
Components



Step 1

Prepare the Transformer and Wiring Harness

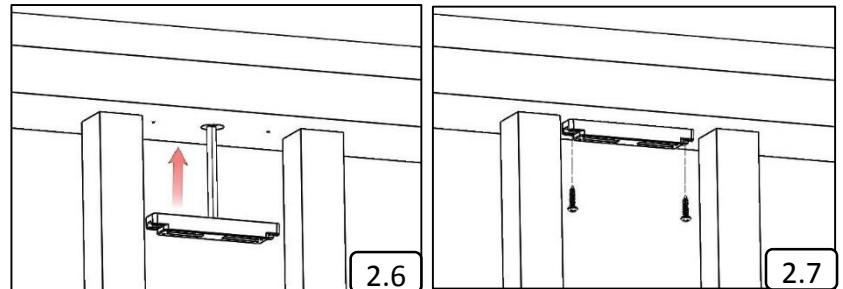
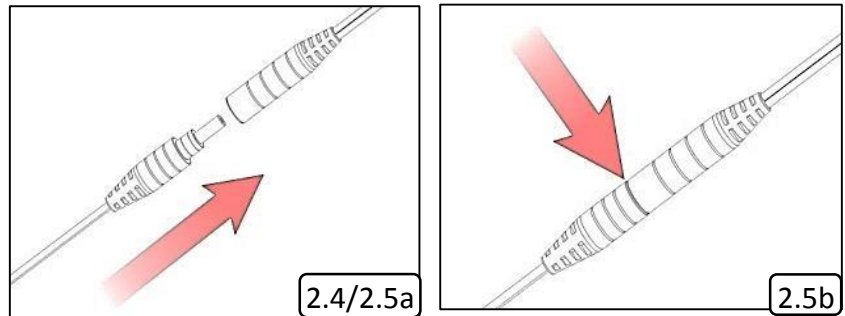
- 1.1 Follow instructions provided with the transformer.
- 1.2 Follow instructions for the wiring harnesses so there is a male connector located at each location that will have a light installed.



Step 2

Prepare the Rail

- 2.1 Place the template at the desired location and pre-drill two 1/16" holes for screws and one 1/2" hole for the wire.
- 2.2 Run a Harness (not included) down the inside of the rail and into the post or post wrap. Run the wire down the post. The male connector should be hanging out of the 1/2" hole that was just drilled.
- 2.3 The female connector should be hanging out of the bottom under the deck - it will fit through a 1/2" hole.
(a) If using a metal post mount, run the wire down the center of the post mount and through the center hole.
(b) If using a wood post, a small notch can be removed from the corner to allow room for the wire. Ensure that future screws or brackets will not damage the wire.
- 2.4 Plug the female connector (from Step 2.3) into the male connector that is located beneath the post (from Step 1.2).
- 2.5 (a) Plug the male connector (from Step 2.2) into the female connector attached to the lens.
(b) Press firmly until the connection is fully engaged. The light should be illuminated if the transformer is on.
- 2.6 Push the wire and connection back through the 1/2" hole until the back of the light fixture is flush with the railing.
- 2.7 Align the pre-drilled holes and use the 2 included stainless steel screws to mount the light fixture to the railing.



Step 3

Finalize Installation

- 3.1 If dark tape was used to cover the photocell on the transformer, remove it for normal operation.

