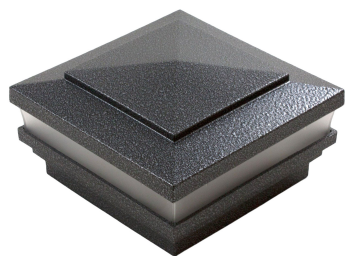


# Low Voltage Post Cap Complete Buying Guide

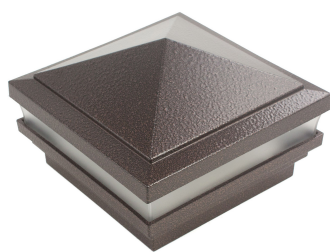
Solar Post Caps Direct offers highly customizable vinyl post caps guaranteed to take any deck, porch, or outdoor space to the next level. With a wide range of options available from classic to designer colors that feature different textures, to color temperatures, Solar Post Caps Direct allows customers to select the post cap that will complement their project. This Low Voltage Post Cap Complete Buying Guide provides in-depth knowledge of the options available on Solar Post Caps Direct to simplify the process.

## Post Cap Styles:

Our Low Voltage Vinyl Post Caps come in a variety of styles, each made of high quality vinyl and designed to fit each customer's desired style and application. We proudly carry and offer the following styles - Cape May, Haven, Neptune and Ornamental. These all feature stunning LED lighting with a wattage similar to that of a 40 Watt light bulb, different colors and color temperature options, and a minuscule draw of only 0.8 Watts per LED.



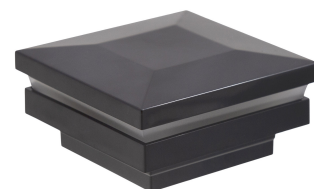
Cape May



Haven



Neptune



Ornamental

Once a desired style is chosen, continue through our Post Cap Buying Guide to learn more about and decide what other options are available to serve each specific application. For more information, feel free to contact one of our skilled professionals to help guide you through the buying process.

## Contact Information:

Phone: (800) 878-7829

Web: [www.SolarPostCapsDirect.com](http://www.SolarPostCapsDirect.com)

Email: [Sales@SolarPostCapsDirect.com](mailto:Sales@SolarPostCapsDirect.com)

## Buying Guide Index:

Low Voltage Lighting 101 – Color Temperatures

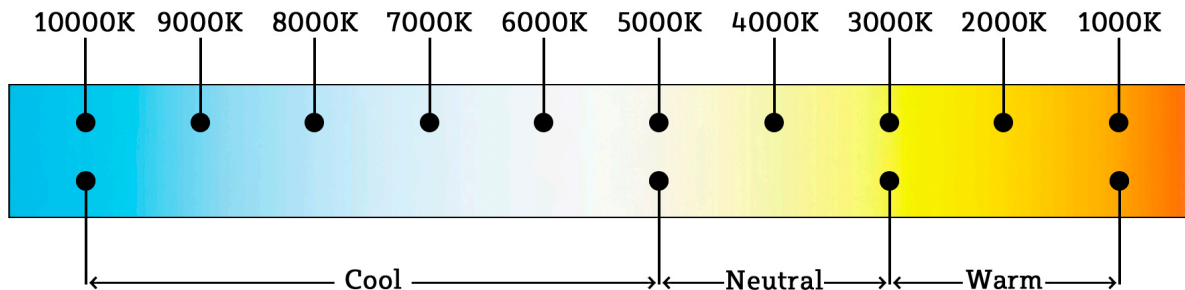
Measuring For Your Post Cap Installation

Designer and Classic Post Cap Color Options

Frequently Asked Questions

# Low Voltage Lighting 101

## Understanding The Difference Between 3K & 5K Color Temperatures



### Color Temperature:

Color Temperature is a way of describing the appearance of light provided by a light bulb and is scientifically measured in degrees of Kelvin (K) on a scale from 1000 to 10000. Kelvin Ratings are frequently found listed with the information provided about low energy fluorescent lamps and LED lamps and are meant to be a universal measurement of the warmth or coolness characteristics of a specific light source. Depending on the location and environment that the light emitted from the post cap will be used for, it is important to know what color temperature and Kelvin Rating will achieve the desired ambiance provided.

3000 Kelvin  
LED Light Source



### Kelvin Ratings (K):

Kelvin Ratings are used to measure the color temperature of a light source, and in scientific terms it is the SI base unit of thermodynamic temperature equal in magnitude to the degree Celsius. Our LED Lighted Post Caps are available in 3000K, or 5000K lighting temperatures. The "warmer" color temperature of the two is the 3000K light option, while the 5000K is the "cooler" temperature option. The higher the Kelvin Rating of any given light source, the whiter the light will be.

5000 Kelvin  
LED Light Source



### Choosing Your Light:

Color Temperature and Kelvin Ratings are vital for understanding indoor lighting, and not as prevalent for outdoor lighting. The Kelvin Rating System can help the end user better define their environment with task-oriented lighting. For example, 2000K - 3000K range offers a softer, white-yellow glow that is ideal for bedrooms, dining rooms, and outdoor spaces in need of ambiance. The 4500K - 5500K range gives off a brilliant white light that is ideal for outdoor areas in great need of bright light.

# Post Cap Measuring Guide

How To Measure Your Existing Posts For Fitting Post Caps

## Solar, Low Voltage And Vinyl Caps:

Our post caps are made to fit posts of their respective size. For example, a 4" post cap will fit a post with a 4" outside diameter. A 5" post cap will fit a post with a 5" outside diameter. Often, a so-called 4" x 4" post is 3.625" x 3.625" when measured. Refer to the chart below to compare your measurements and ours. The caps that we offer are labeled for use with the named post size, therefore technically each cap will measure slightly different than its actual dimensions. It should fit just snugly enough that it will prevent corrosion beneath, while also being able to grip and hold itself onto the top of the post.

## How To Measure Post Caps:

Measure external post caps from one inner wall to the parallel side's inner wall. External Post Caps are designed to sit directly on top of a post, fitting just tightly enough that it prevents corrosion by stopping water from penetrating the surface of the post as well as allowing the cap to grip and hold itself onto the post without the use of any screws or adhesive.

*Tip: Measuring from the inner edge of one of the post cap's walls to the opposite side's inner edge should consistently match with the corresponding post size.*

## Post Sizing Table

| Our Cap Size (OD) | Post Size                               |
|-------------------|---|
| 2"                | 2" x 2" Aluminum Posts OD               |
| 3.5"              | 3.5" x 3.5" Vinyl Posts OD              |
| 3.625"            | 4" x 4" Wood Posts (3.5" x 3.5" OD)     |
| 4"                | 4" x 4" Vinyl Posts OD                  |
| 4.5"              | 4.5" x 4.5" Vinyl Posts OD              |
| 5"                | 5" x 5" Vinyl Posts OD                  |
| 5.625"            | 5.625" x 5.625" Wood Posts (6" x 6" OD) |
| 6"                | 6" x 6" Vinyl Posts OD                  |

# Post Cap Color Guide

Classic Color Collection and Designer Color Collection

The LMT Color Collection for Post Caps is available in a wide variety of colors and finishes to suit any residential or commercial fence. Adding one of ours Post Caps not only gives the fence a complete look, but also protects the post from internal damage, ensuring a long lifespan.

## Designer Color Collection:

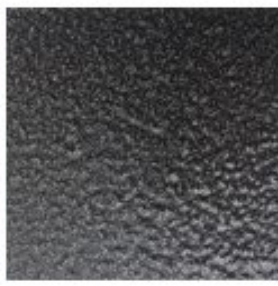
The Designer Color Collection has a textured finish and several options available including Hammertone Black, Antique Gold, Antique Gray, Antique Brown, and Antique Copper.



Hammertone Black



Antique Gold



Antique Gray



Antique Brown



Antique Copper

## Classic Color Collection:

The Classic Color Collection includes Almond, Beige, Khaki, and White and is designed to complement any home or business. With a smooth finish, these Classic Colors are easy to match to any fence. The Classic Collection offers a neutral palette ideal for commercial fences, businesses, and homes alike.



Almond



Beige



Khaki



White

# Frequently Asked Questions

Get The Answers To Our Most Frequently Asked Questions

| Question  | Answer  |
|---|---|
| How do I install my post cap?                             | This can differ depending on the type of post you are installing onto, but the typical answer is using an exterior-grade adhesive to apply to inside edge of the bottom of the cap. Then simply stick the cap onto the post and let the adhesive dry. |
| How do I clean my post cap?                               | All that's really needed is a wet rag and your preferred cleaner. Simply pop the top off and clean the acrylic lense and wipe down the rest of the post cap.  |
| How long do the bulbs typically last?                     | The bulbs included will usually last about 10 years with the normal usage of 6-8 hours per day.   |
| Am I able to buy replacement bulbs if mine burns out?     | No, because the bulbs are integrated into the whole design of the post cap and are not designed to be replaceable.  |
| Can a dimmer switch be used with my low voltage post cap? | Yes, we do offer a dimmer remote for 12 Watt LED low voltage post cap applications. It's designed to be used between the transformer and photo eye.   |
| How long will it take for me to receive my post cap?      | Because each post cap is made to order, some designer and specialty colors can take up to two weeks. However, most white post caps will usually ship within one week.   |