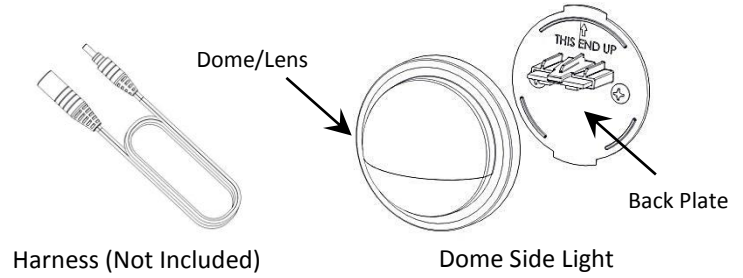


# LED Dome Side Light

## Pre - Installation Notes

- Do not cut any wires. Any extra wire length can be coiled up.
- During installation, it is recommended that you temporarily cover the photocell on the transformer with dark tape so the lights will be on when you plug them in. This will help check for any issues during installation. Remove tape when done.

## Components



## Step 1

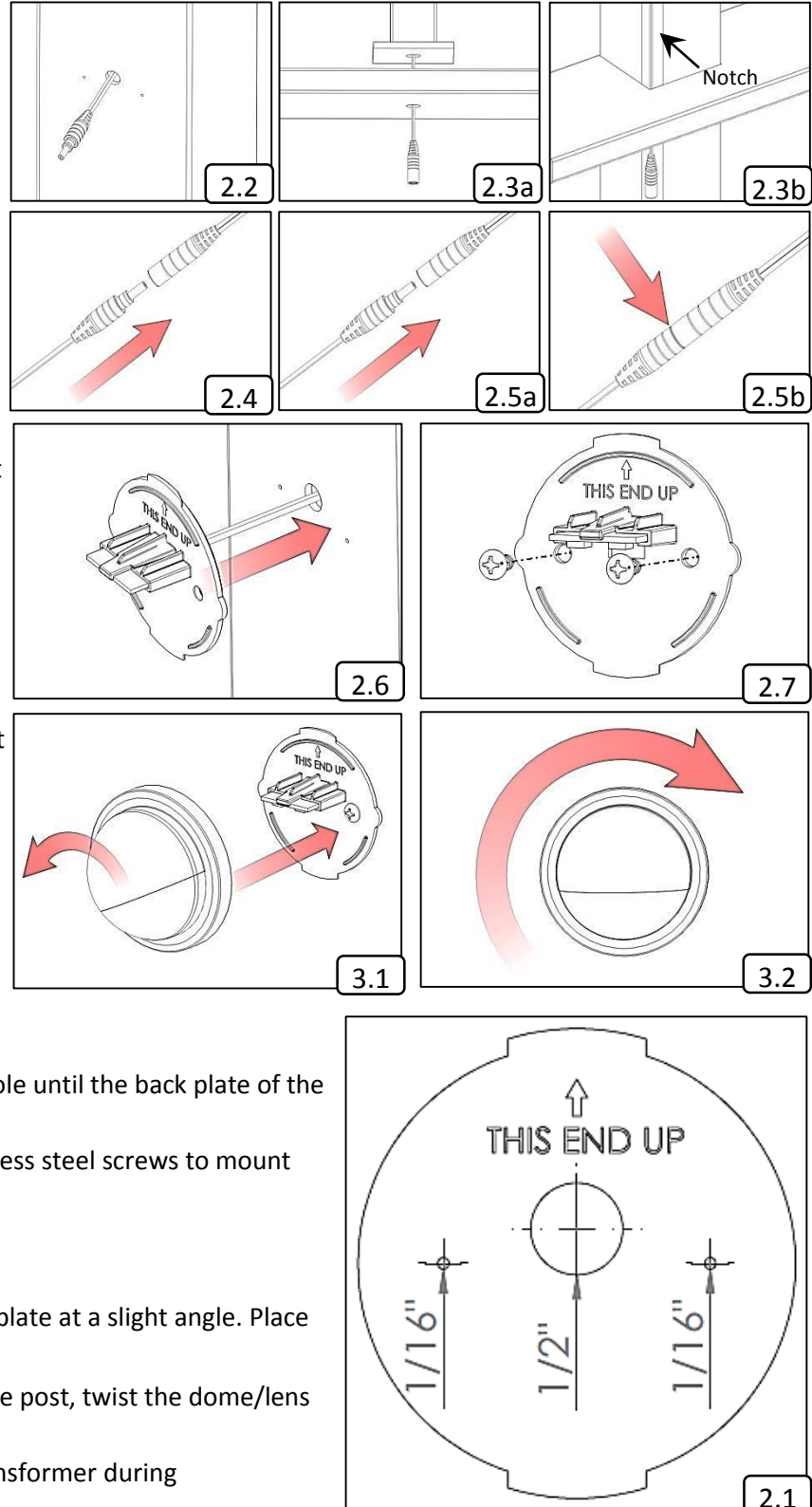
### Prepare the Transformer and Wiring Harness

- 1.1 Follow instructions provided with the transformer.
- 1.2 Follow instructions for the wiring harnesses so there is a male connector located at each post location that will have a light installed.

## Step 2

### Prepare the Post and the Back Plate

- 2.1 Place the template at the desired location and pre-drill two 1/16" holes for screws and one 1/2" hole for the wire.
- 2.2 Run a Harness (not included) down the inside of the post or post wrap with the male connector hanging out of the 1/2" hole that was just drilled.
- 2.3 The female connector should be hanging out of the bottom under the deck - it will fit through a 1/2" hole.  
(a) If using a metal post mount, run the wire down the center of the post mount and through the center hole.  
(b) If using a wood post, a small notch can be removed from the corner to allow room for the wire. Ensure that future screws or brackets will not damage the wire.
- 2.4 Plug the female connector (from Step 2.3) into the male connector that is located beneath the post (from Step 1.2).
- 2.5 (a) Plug the male connector (from Step 2.2) into the female connector attached to the light.  
(b) Press firmly until the connection is fully engaged. The light should be illuminated if the transformer is on.
- 2.6 Push the wire and connection back through the 1/2" hole until the back plate of the light is flush with the post.
- 2.7 Align the pre-drilled holes and use the 2 included stainless steel screws to mount the back plate of the light to the post.



## Step 3

### Install Dome Lens and Finalize Installation

- 3.1 Place the dome/lens portion of the light over the back plate at a slight angle. Place the dome/lens portion over the back plate.
- 3.2 Once the dome/lens portion of the light is flush with the post, twist the dome/lens clockwise until it locks into place.
- 3.3 If dark tape was used to cover the photocell on the transformer during installation, remove it for normal operation.